

FPA Test Report

QH2-72
640x512



PARAMETER	VALUE	UNITS	CRITERIA	PASS/FAIL
Active array size	640 x 512	-		
F/number	2	-		
ROIC gain setting	1.33	-		
Integration time [†]	9.77	ms		
Frame rate	16	Hz		
FPA Temperature	68	K		
QWIP bias	0.8	V		
Aperture-corrected DC output μ	1819.8	mV		
Aperture-corrected DC output σ	45.1	mV		
Aperture-corrected DC output σ/μ	2.5	%		
Aperture-corrected DC output failures	225	-	> \pm 300 mV	
Differential response mean μ	40.7	mV/ $^{\circ}$ C		
Differential response st. dev. σ	0.7	mV/ $^{\circ}$ C		
Differential response σ/μ	1.8	%	< 5 %	PASS
Blackbody responsivity [‡]	10.6	mA/W	@ 1 V bias	
Differential response failures	101	-	> \pm 20 % of μ	
Temporal NE Δ T mean μ	24.1	mK	< 30 mK	PASS
Temporal NE Δ T std. dev. σ	3.8	mK		
Temporal NE Δ T σ/μ	15.7	%		
Temporal NE Δ T failures	25	-	> 70 mK	
Spatial NE Δ T mean μ	16.5	mK	< 30 mK	PASS
Spatial NE Δ T std. dev. σ	14.0	mK		
Spatial NE Δ T Failures	59	-	> 100 mK	
Conversion efficiency mean μ	2.21	%	@ actual bias	
Conversion efficiency st. dev. σ	0.04	-		
Conversion efficiency σ/μ	1.8	%		
Post NUC uniformity (σ/μ)	0.095	%		
ROIC power dissipation	75.2	mW	< 90 mW	PASS
Composite number of bad pixels	235	-		
Composite operability	99.928	%	> 99.5 %	PASS
Forbidden clustered failures?	No	-	No	PASS
Overall status		-		PASS

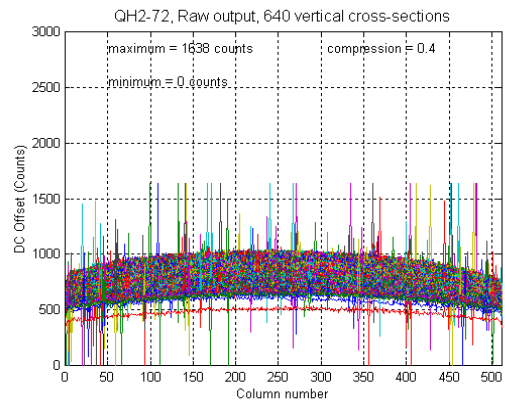
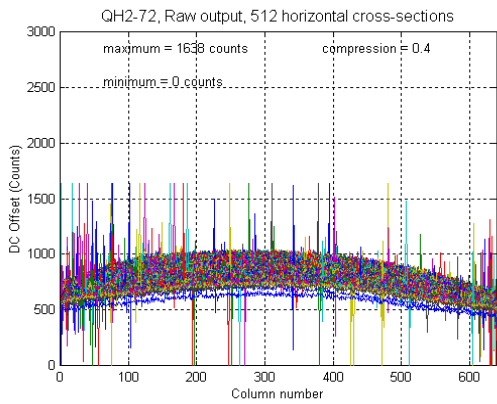
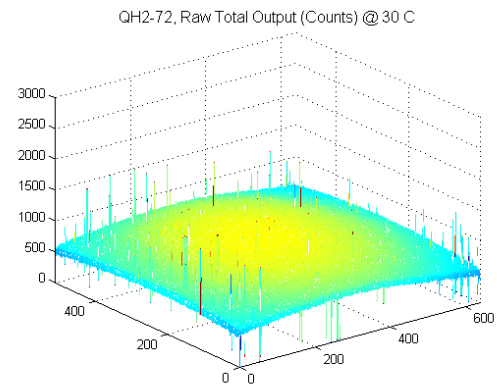
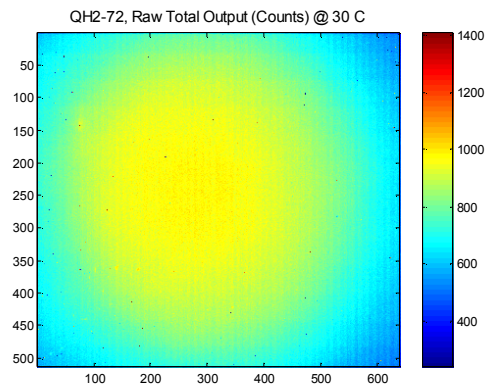
[†] Bias and/or integration time adjusted to fill the well to 75% of total capacity when FPA is exposed to BB source set to 50 $^{\circ}$ C

[‡] Normalized to 1-V bias and unity mux gain.

COMMENTS:

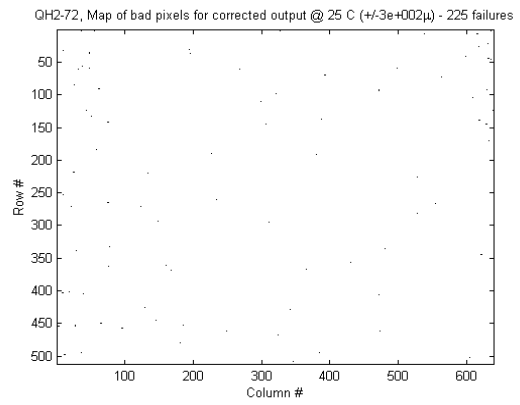
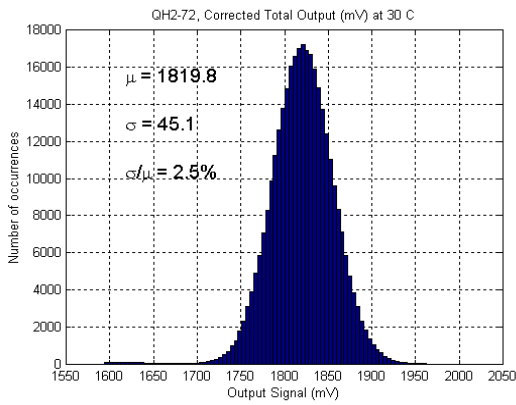
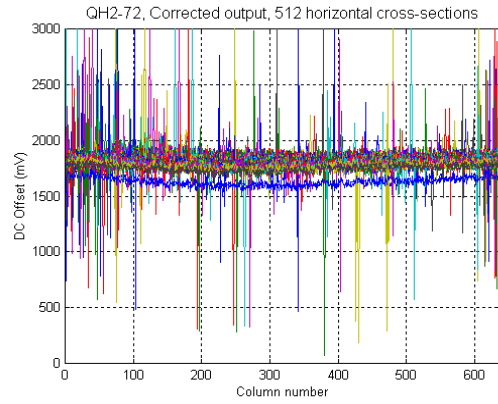
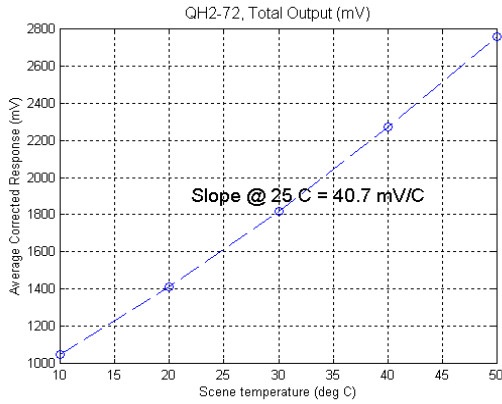
QH2-72

Uncorrected DC Offset Output @ 30°C Dark current + photocurrent at 30-C scene temperature



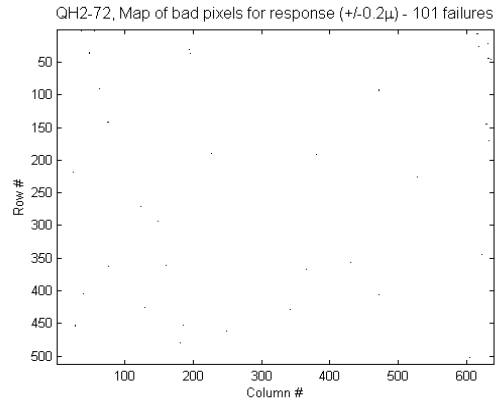
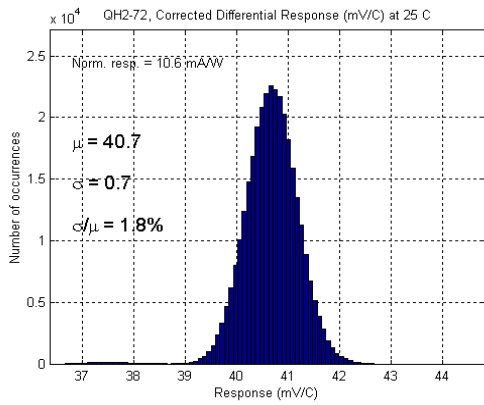
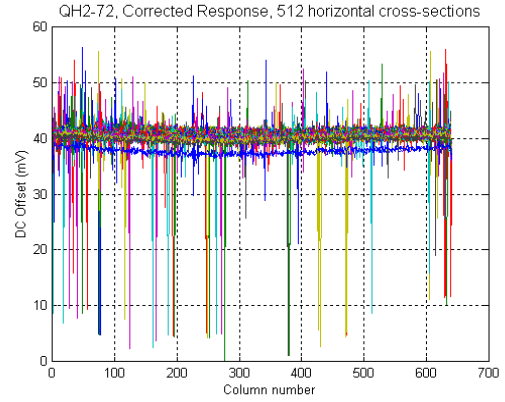
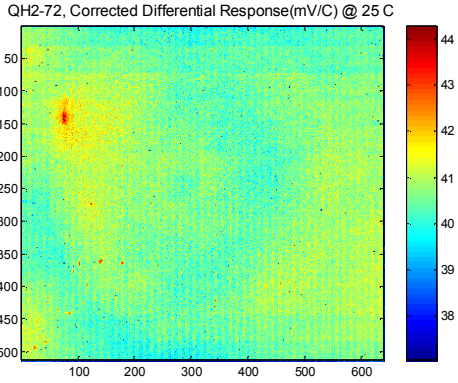
QH2-72

Aperture-corrected DC Output @ 30°C Dark current + photocurrent at 30-C scene temperature



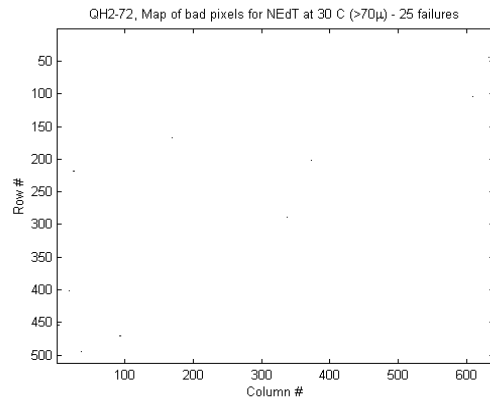
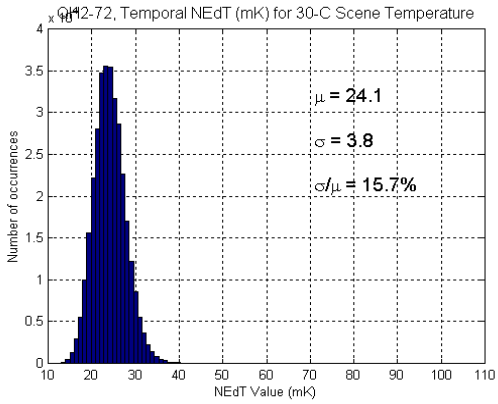
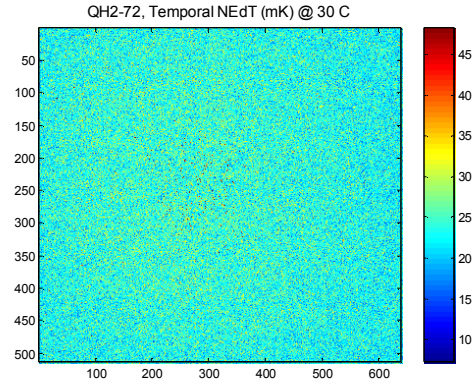
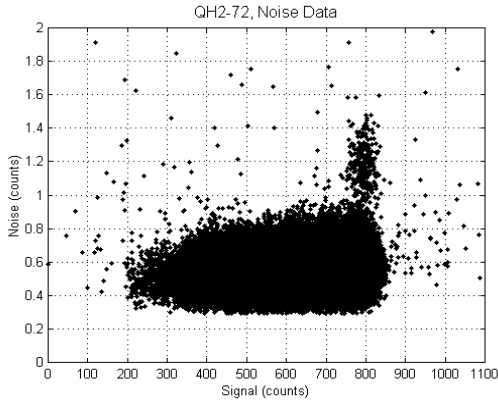
QH2-72

Aperture-Corrected Differential Response @ 25°C Photocurrent only (difference signal between 2 scene temperatures)



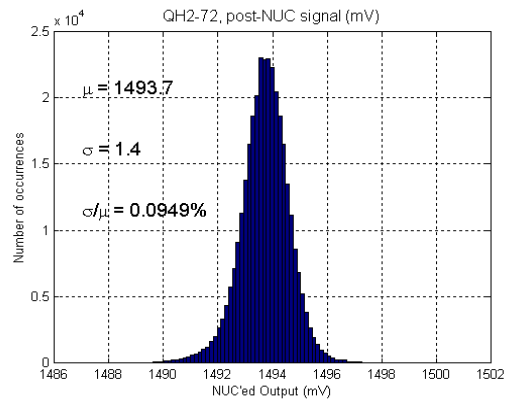
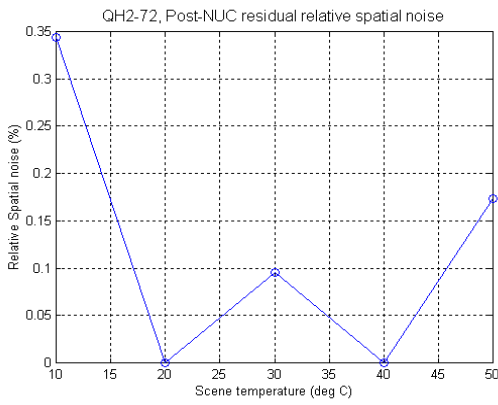
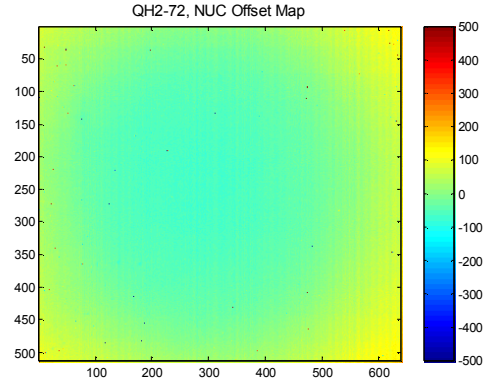
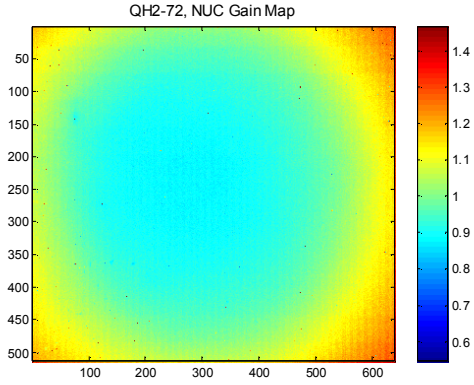
QH2-72

Temporal NE Δ T @ 25°C



QH2-72

Two-point NUC of Raw Output



QH2-72

Spatial NE Δ @ 25°C

